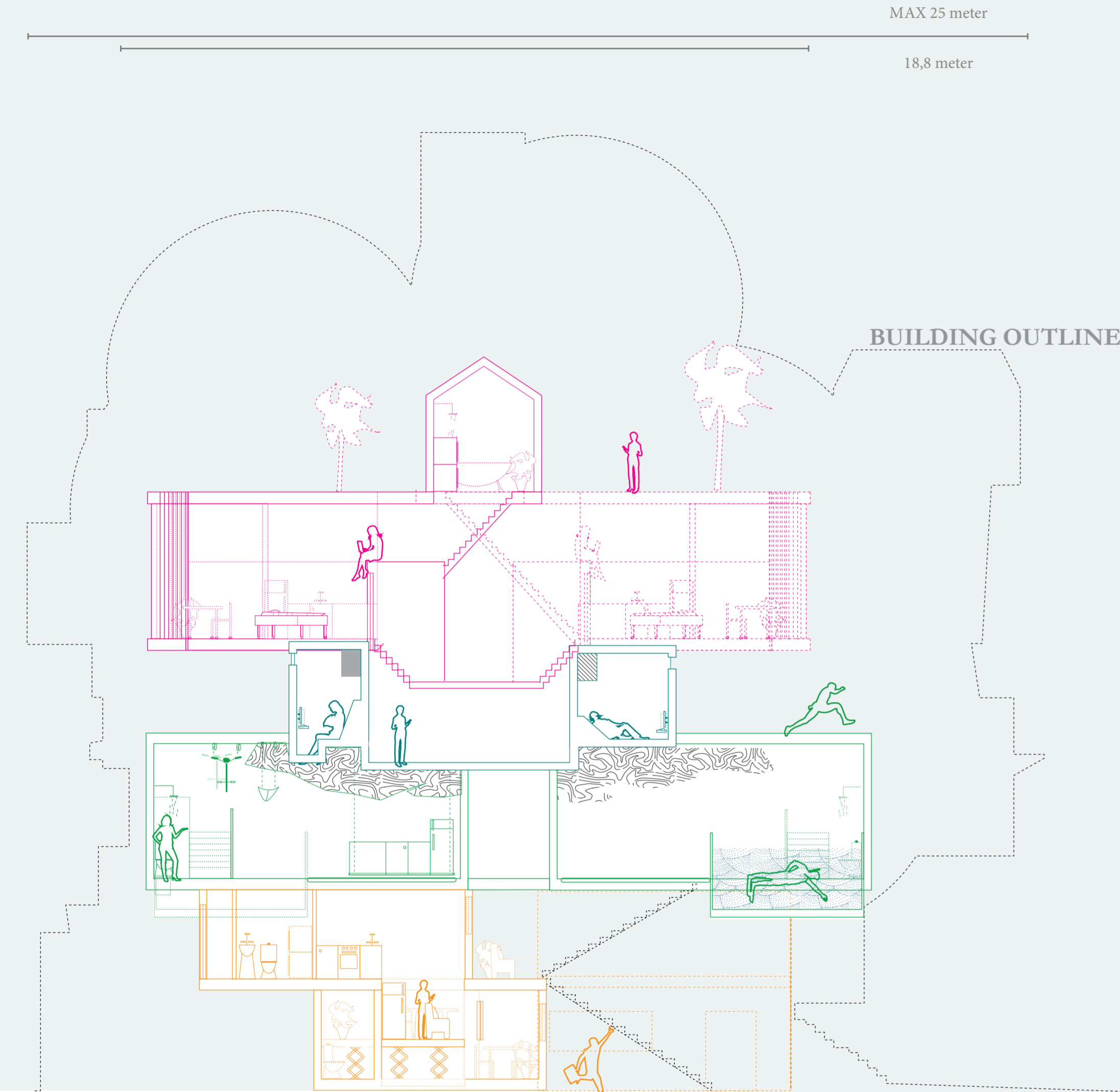


A

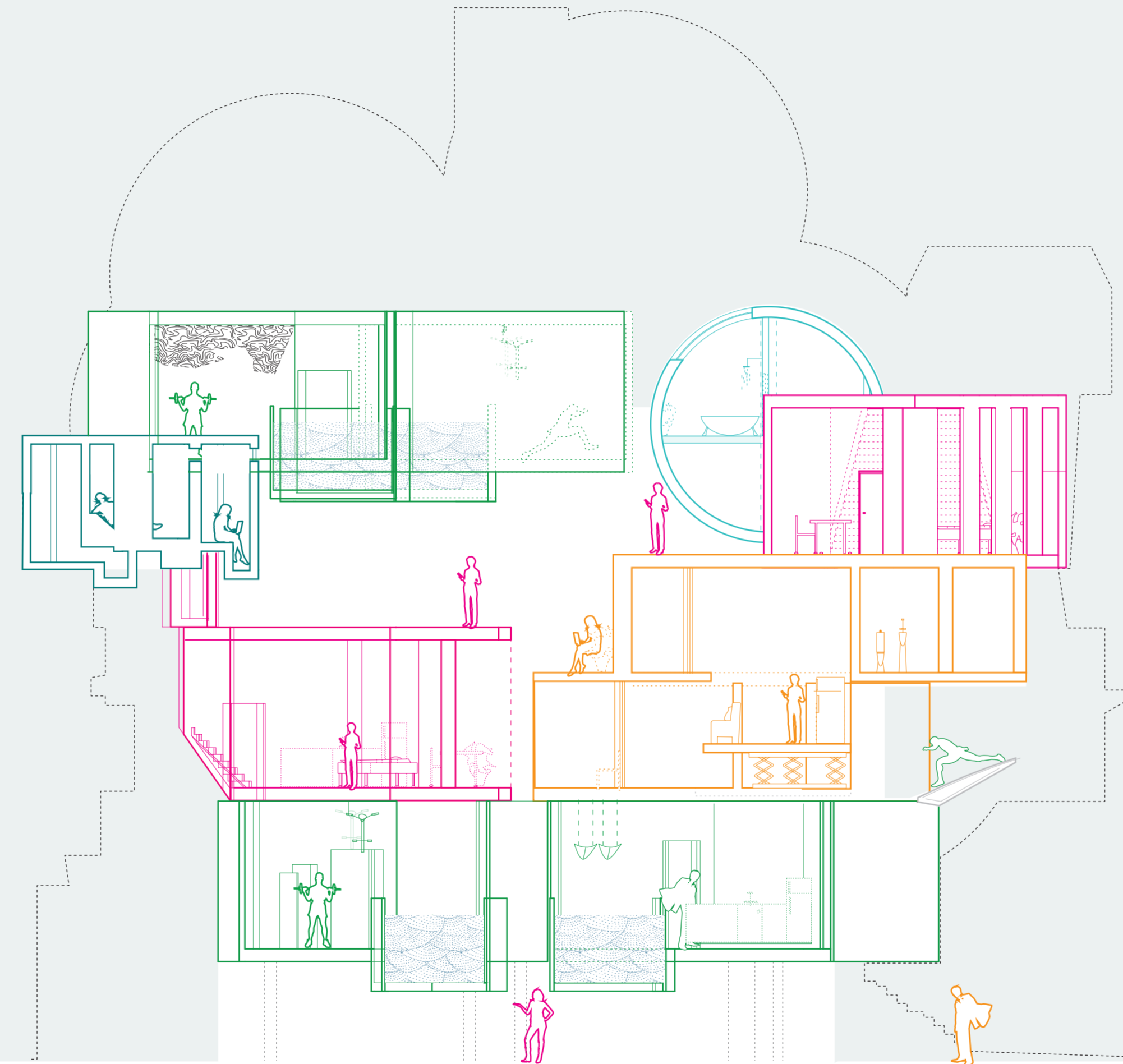


The concept for part A is to cluster together the different typologies, and see what can happen.

How will the InstaGirls react to neighbours just like themselves? Will the MiniWebs be more social now that they have a space together, but still private from the rest of the neighbours? Will the WorkAHholics be too distracted to work with bicycle parking

and Time Off people competing right in front of their windows? Is it possible that even for the TimeOff's, to much competition will become just that: to much?

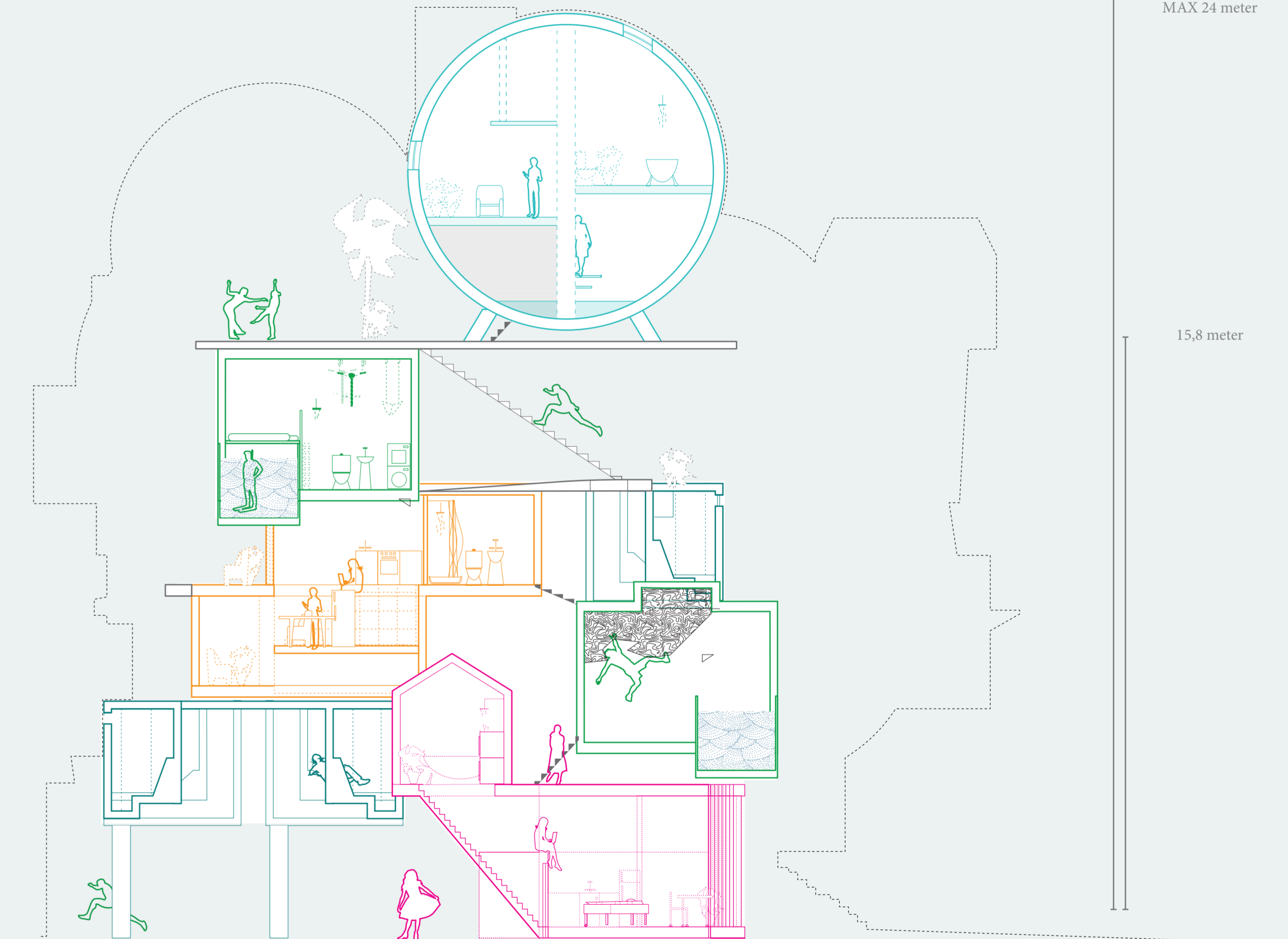
B



When living in an urban area, one will always have neighbours. Some neighbours that can look into ones own home, and some neighbours that can be looked at. However, no matter how close the house on the other side of the street is, there are at least a dusinn different homes to look into, and these are the neighbours that one is not

meeting by the mailbox or in the elevator. The concept for B is to look at possble spatial ways to combine the 5 typologies with all the window facades facing inwards to the center, with no other choise than to spy on your next door neighbour.

C



Where as in section B the idea was to get the neighbours to look at eachother, but not necessarily meet, the opposite is the case in section B. Here the concept is to look at possible spatial responses to including each typologie's typical parameters, as well as have all the entrance doors facing towards at least one or more neighbours.

SCALE 1:100

← SOUTH - WEST →